

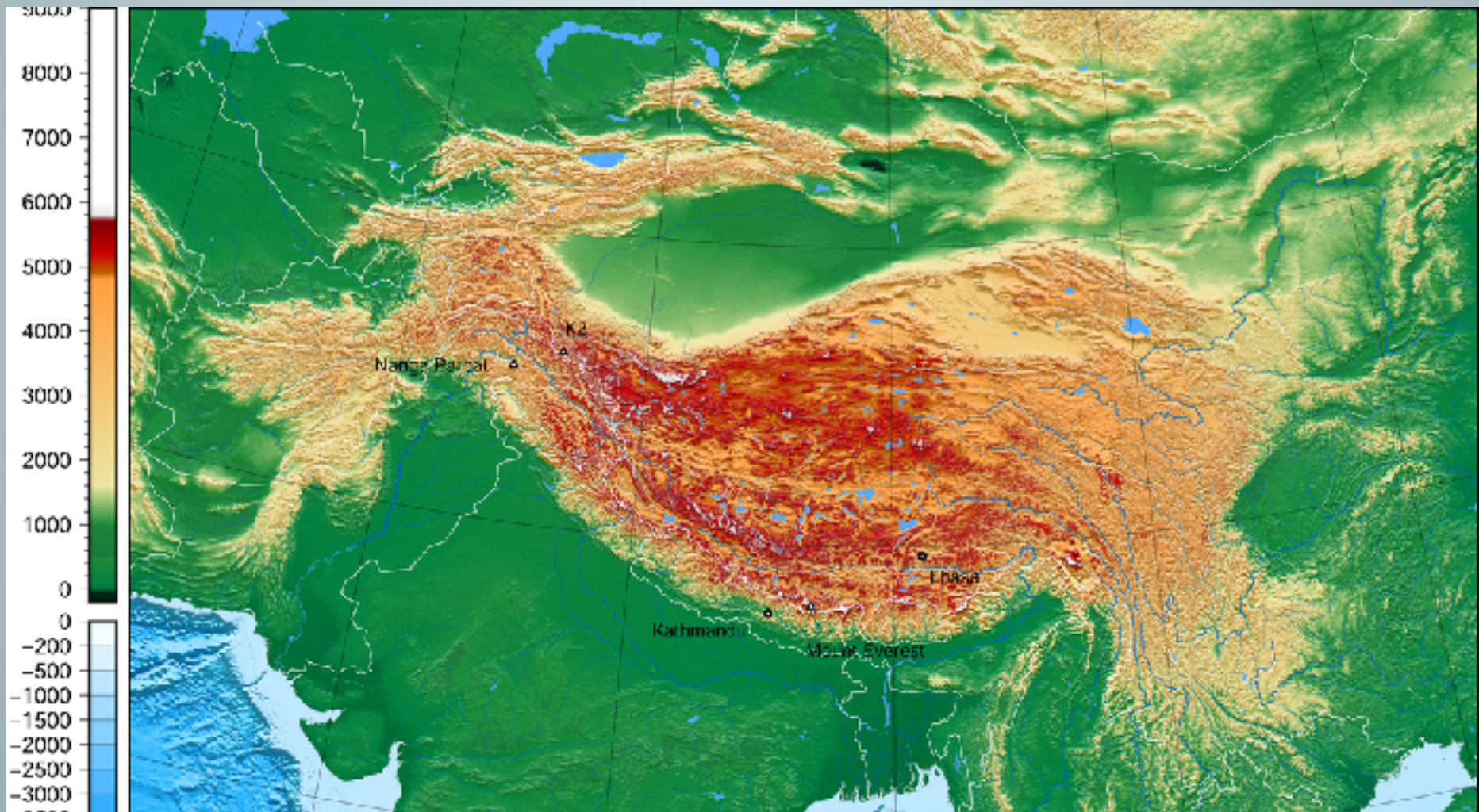
TRAVELLERS TO TIBET

Europeans on the roof of the world

Many Difficulties

- ▣ Mountains
 - Himalayas in South
 - Central plateau almost 5,000m
- ▣ Climate
- ▣ Politics
 - Qing Dynasty China
 - British India

Topographical map



Mount Kailash



David-Néel's Path



First European Visitors

- ▣ Portuguese Andrade and Marques in 1624
 - Jesuit missionaries
 - First documented Europeans to enter Tibet
 - Travelled from Agra in India
- ▣ Ippolito Desideri, Italian Jesuit
 - Travelled via Kashmir and Ladakh reached Lhasa in 1716
 - Learnt Tibetan wrote books in Tibetan on Christian doctrines
 - First European to have an understanding of Tibetan Buddhism. Books not published until 1950
- ▣ Thomas Manning
 - First British person to enter Lhasa in 1811

Abbé Huc

- ▣ French missionary priest sent to China 1839
- ▣ 1844 journey to Tibet dressed as a lama
 - Travelled with Joseph Gabet
- ▣ Stayed at Kumbum monastery, learnt Tibetan
- ▣ Entered Lhasa January 1846
 - Opened a Christian chapel
- ▣ Expelled from Lhasa later in 1846
 - Chinese wanted to know why they there
- ▣ Wrote book on his travels in Tibet

Abbé Huc



Women Travellers

- ▣ Annie Royle Taylor 1892
 - Missionary
 - Expelled by Tibetan authorities 3 days short of Lhasa
- ▣ Mrs St. George Littledale 1895
 - With her explorer husband, nephew and dog
 - Turned back 49 miles short of Lhasa
- ▣ Susie Rijnhart 1898
 - Canadian missionary and doctor
 - Tried to reach Lhasa to preach

Alexandra David Neel

- ▣ Born in France in 1868
- ▣ Early interest in religion and mysticism
 - Converted to Buddhism age 21
- ▣ Life as an opera singer 1895-1902
 - Marriage to Phillipe Neel in 1904
- ▣ Studying Buddhism in Sikkim 1911 – 1916
 - Meets Dalai Lama 1912
 - Lachen monastery and Tibetan austerities
 - Meeting Aphur Yongden in 1914

Young Alexandra age 18



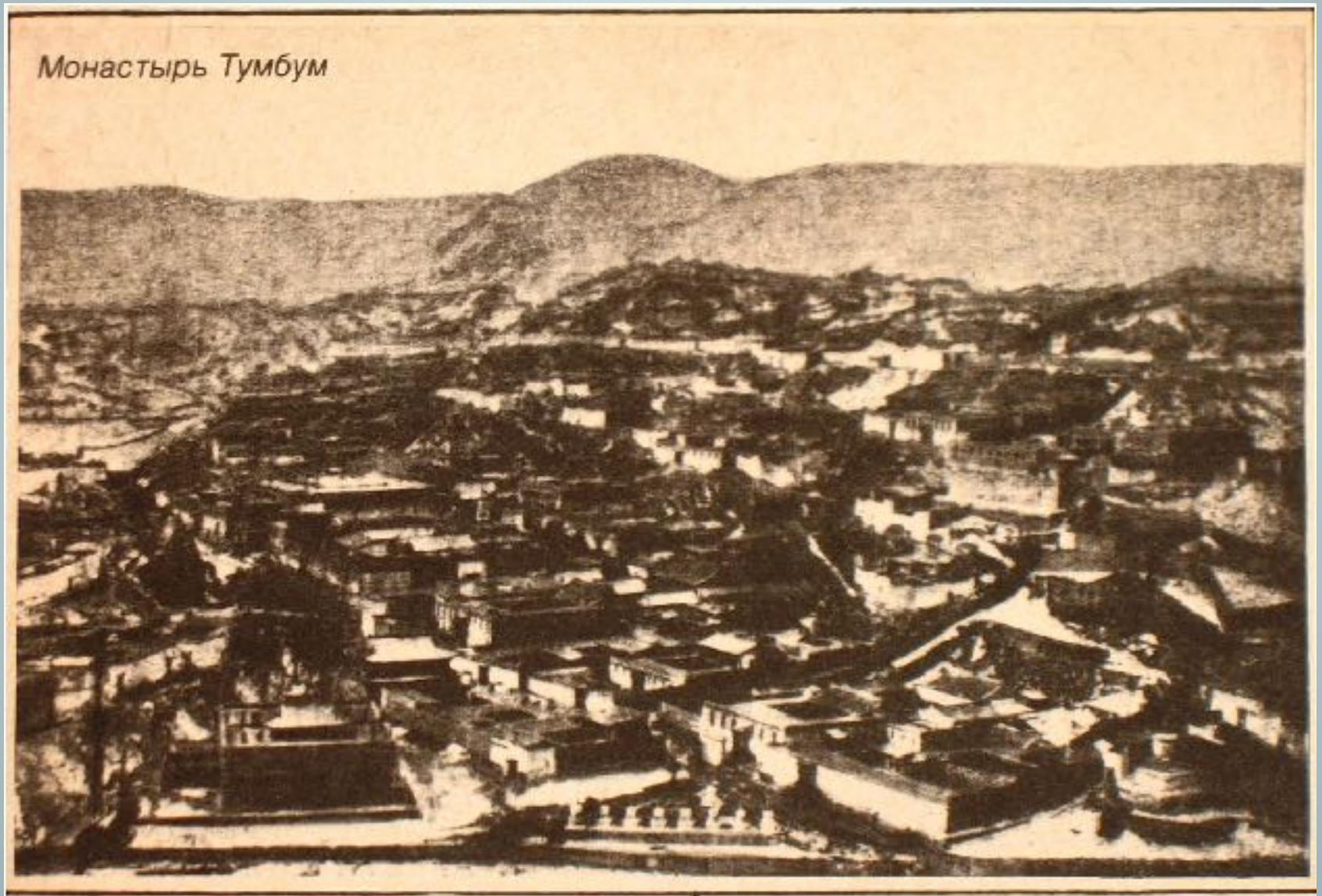
First visits to Tibet

- ▣ Tashilumpo monastery 1916
 - With Yongden and without permission
 - Meeting the Panchen Lama
- ▣ Travels in China from East to West
 - Returning from Japan and Korea
 - Through Gobi desert and Mongolia
- ▣ Three years at Kumbum monastery 1918-1921
 - Large monastic complex in Amdo
 - Translating Buddhist texts with Yongden

Tashilhunpo



Kumbum in 1900



David-Néel's Path



Journey to Lhasa

- ▣ Travels in Amdo
 - Meeting George Pereira: area of the Po valley
 - Impossible to get permission to travel to Lhasa
- ▣ Left Yunnan October 1924 with Yongden
 - Disguised as pilgrim beggars walking
 - Clothing, hat and boots
 - Rough camping, occasional hospitality
 - Food and fuel, provisions from monasteries
 - Problems of route finding
 - Avoiding officials

Alexandra as a beggar and a Nun



Tibetan nuns



Incidents on the way

- ▣ Yongden a Nyingma monk
 - Services provided for local people
 - His sorcerer father
- ▣ River/valley crossings
 - Broken cable haul
- ▣ High passes
- ▣ Dealing with robbers
- ▣ Yongden's foot injury
- ▣ Deceptions
 - Crossing toll bridge

Potala Palace



Lhasa and beyond

- ▣ The strange lama
- ▣ Lhasa at last
 - A pilgrim tourist
 - Monlam festivities
- ▣ Leaving Lhasa
- ▣ Another visit to Tibet
- ▣ Endings

Jokhang



Jokhang interior



Sándor Csoma de Kőrös

- ▣ Born in Transylvania, Hungary 1784
- ▣ Wanted to find the Hungarian homeland
 - Linguistic analysis
 - Thought to be near Yarkand, W China
- ▣ Set off for Asia 1820
 - Reached Lahore March 1822
- ▣ Tibetan studies in Zanskar, Ladakh
 - Extreme cold in winter
- ▣ Published first Tibetan dictionary and grammar

