

*U3A PHOTO  
FORUM*

*ARCHITECTURAL  
PHOTOGRAPHY  
&  
CITYSCAPES*

Graham Wickens

November 2023



Architectural photography focuses on capturing photographs of whole buildings or other constructed structures, bridges for example, or part of them. It covers both the exteriors and interiors of such subjects



Architectural photography has a long history back to the 1820's when the first permanent photo, View from the Window at Le Gras by Nicephore Niepce was also the first architectural photo as it is a view of buildings



This is a colourized version of that photo

Throughout the 19<sup>th</sup>  
and 20<sup>th</sup> centuries  
architectural  
photography became  
more creative and  
diverse

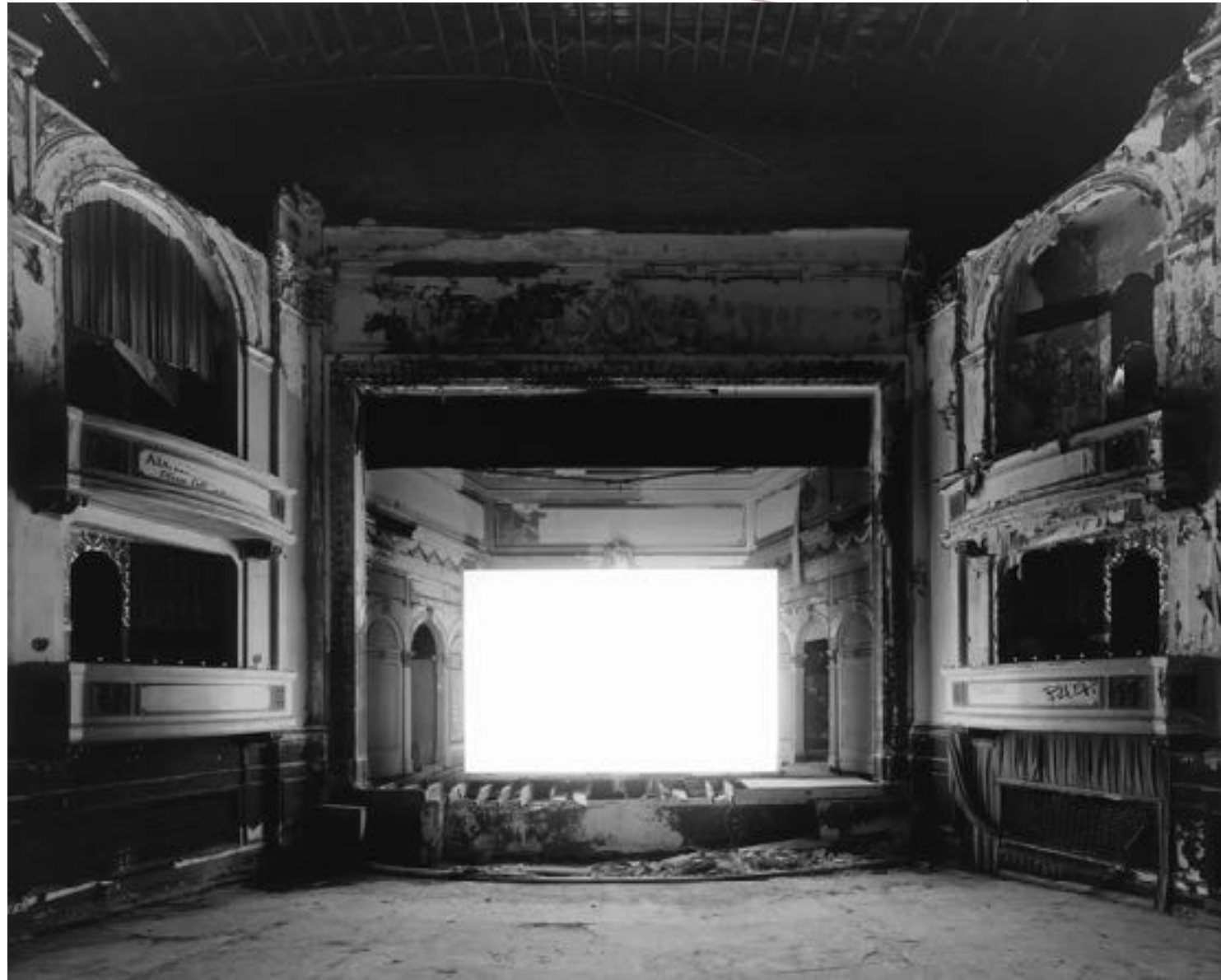
Berenice Abbott took  
photos of New York during  
the Great Depression



Julius Shulman  
popularized the  
modernist  
architecture of  
California with his  
images



Hiroshi  
Sugimoto used  
long exposure  
and minimalism  
to create his  
images



## Equipment

Ideally an SLR or mirrorless camera though a smart phone could also work

A wide-angle lens to capture the whole scene

The following may also be considered:-

Tripod, though the image stabilization on modern cameras reduces this need significantly

A polarizing filter to reduce glare and reflection

A tilt-shift lens to correct the perspective distortion and keep vertical lines parallel

## Tilt-Shift Lenses vs. Photoshop and Lightroom

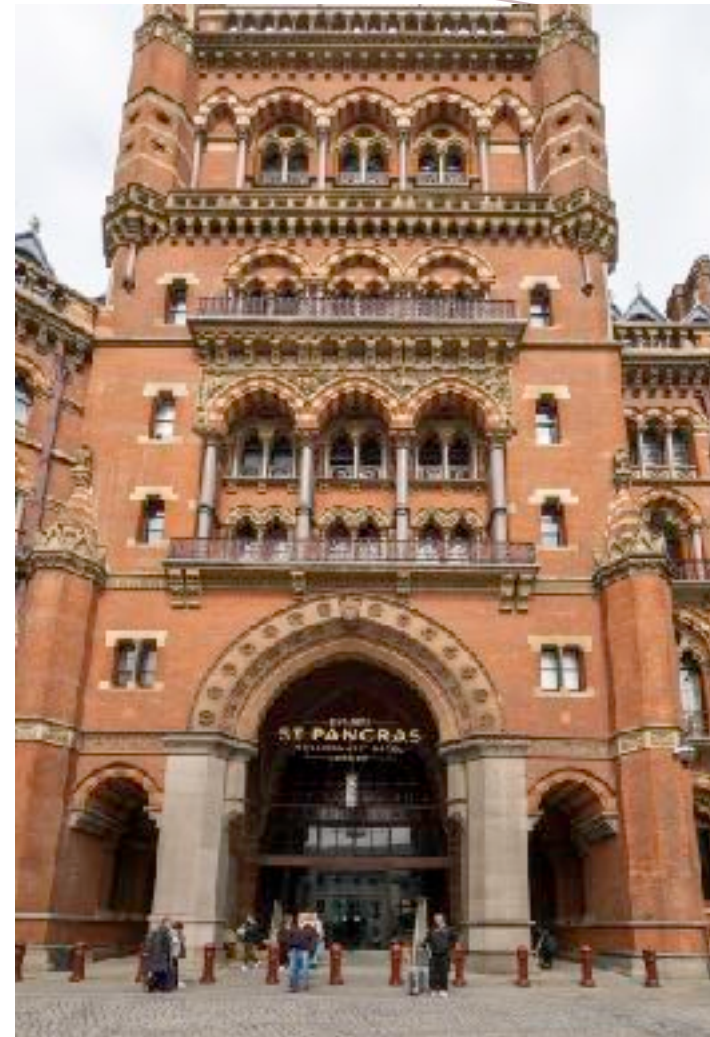
Photographing buildings from ground level will create a converging image known as keystoneing. Tilting the camera and lens vertically emphasises the distortion.

Not long ago you had to employ a perspective-control or shift lens to correct this. The two examples shown cost in the region of £3000!

In today's digital post-processing world it is becoming easier and more seamless to perform these corrections in Photoshop or





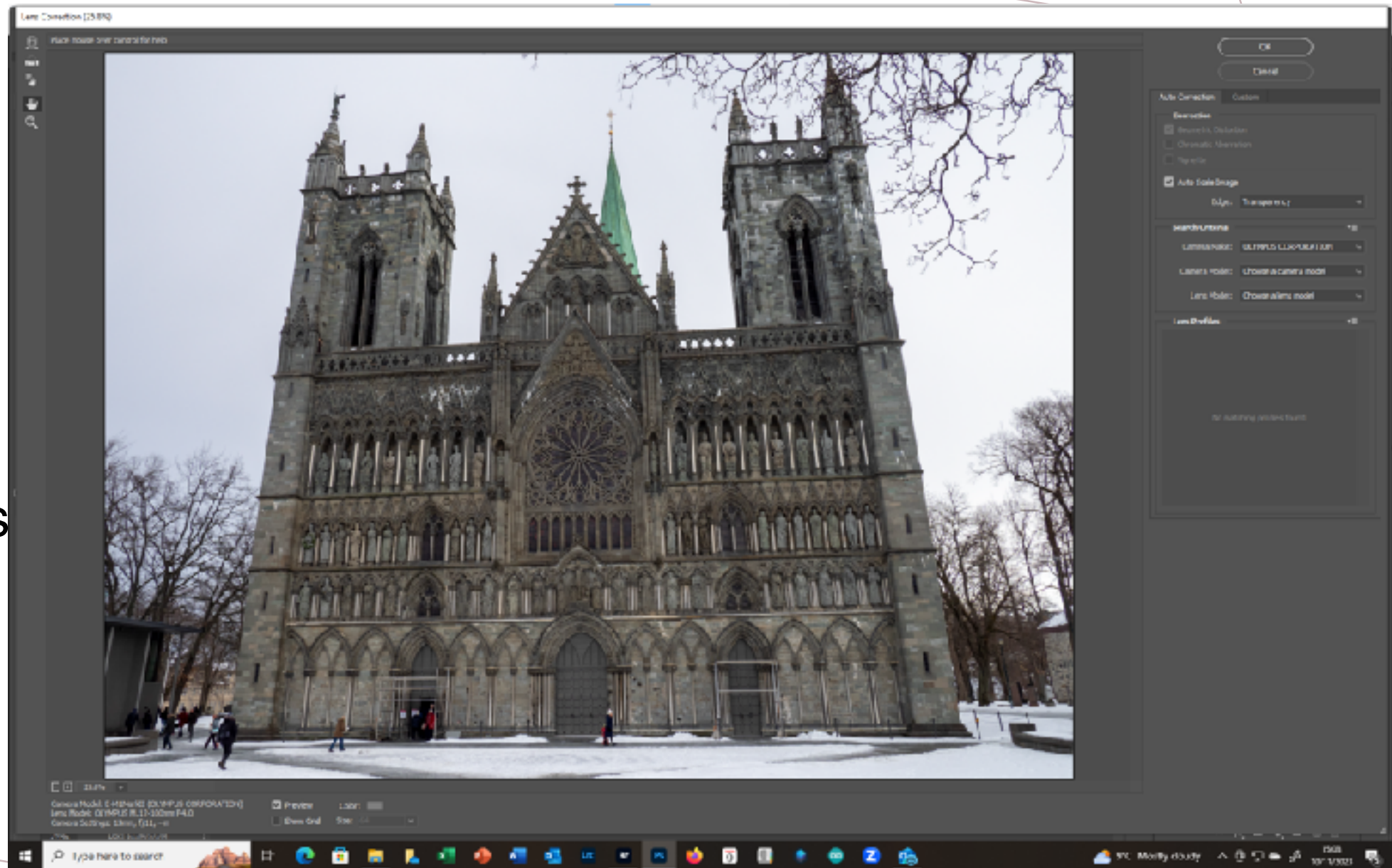


This was my first attempt in Photoshop and as you can see some of the image was lost

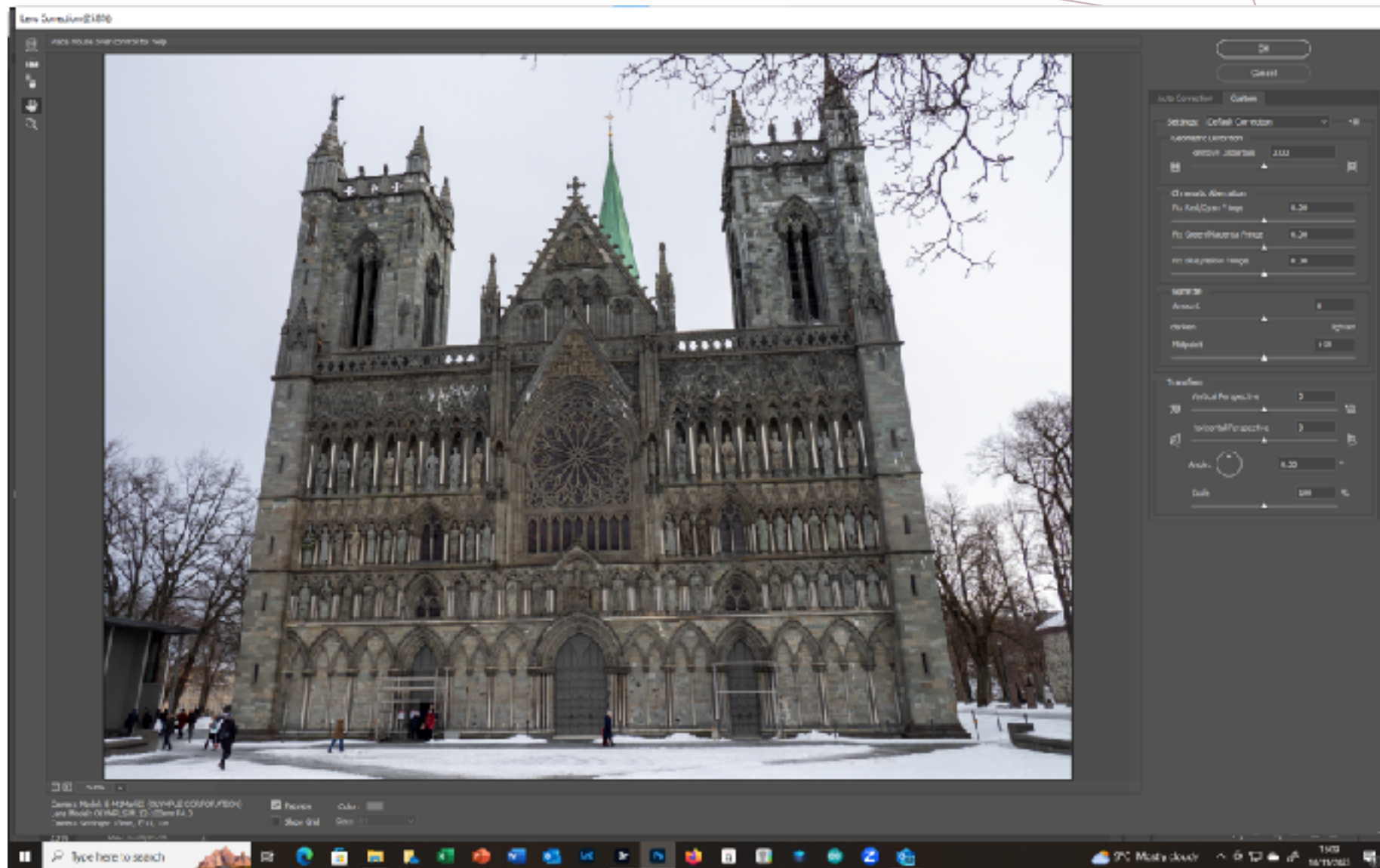


How to straighten this in Photoshop and Lightroom

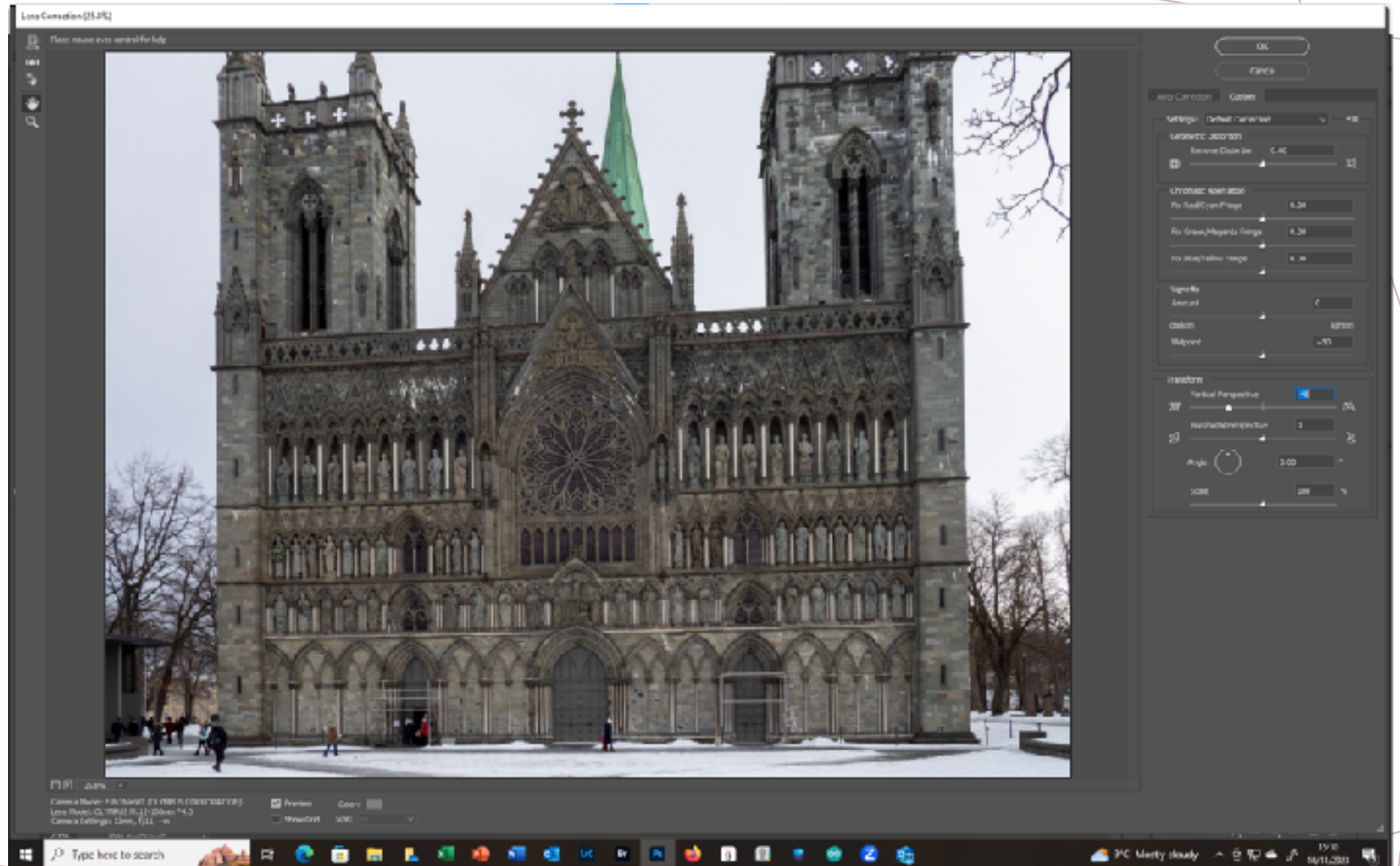
In Photoshop  
under the  
filters menu is  
Lens  
Correction  
When it  
opens this is  
the screen  
you get



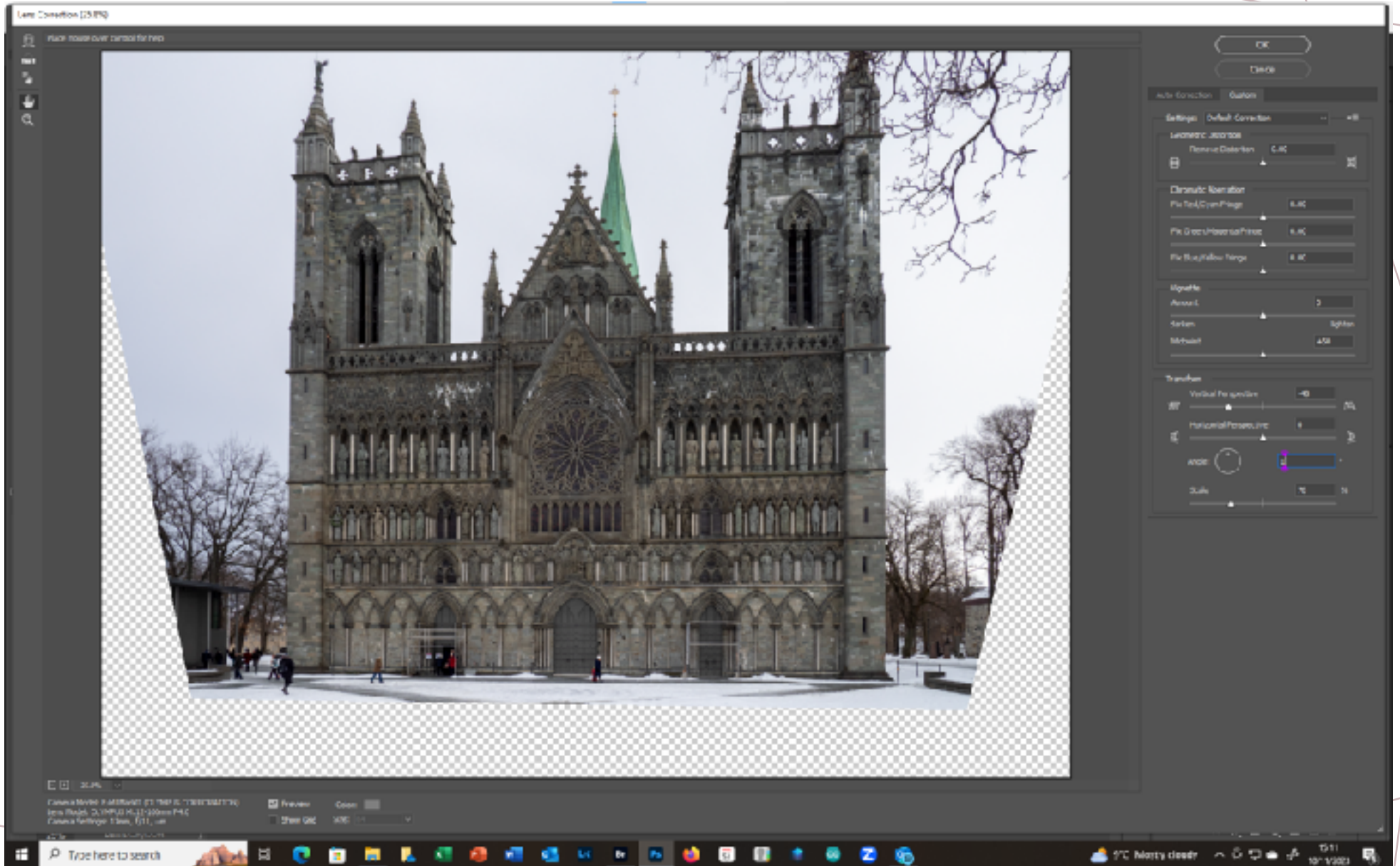
Click on Custom to open the sliders that will be needed



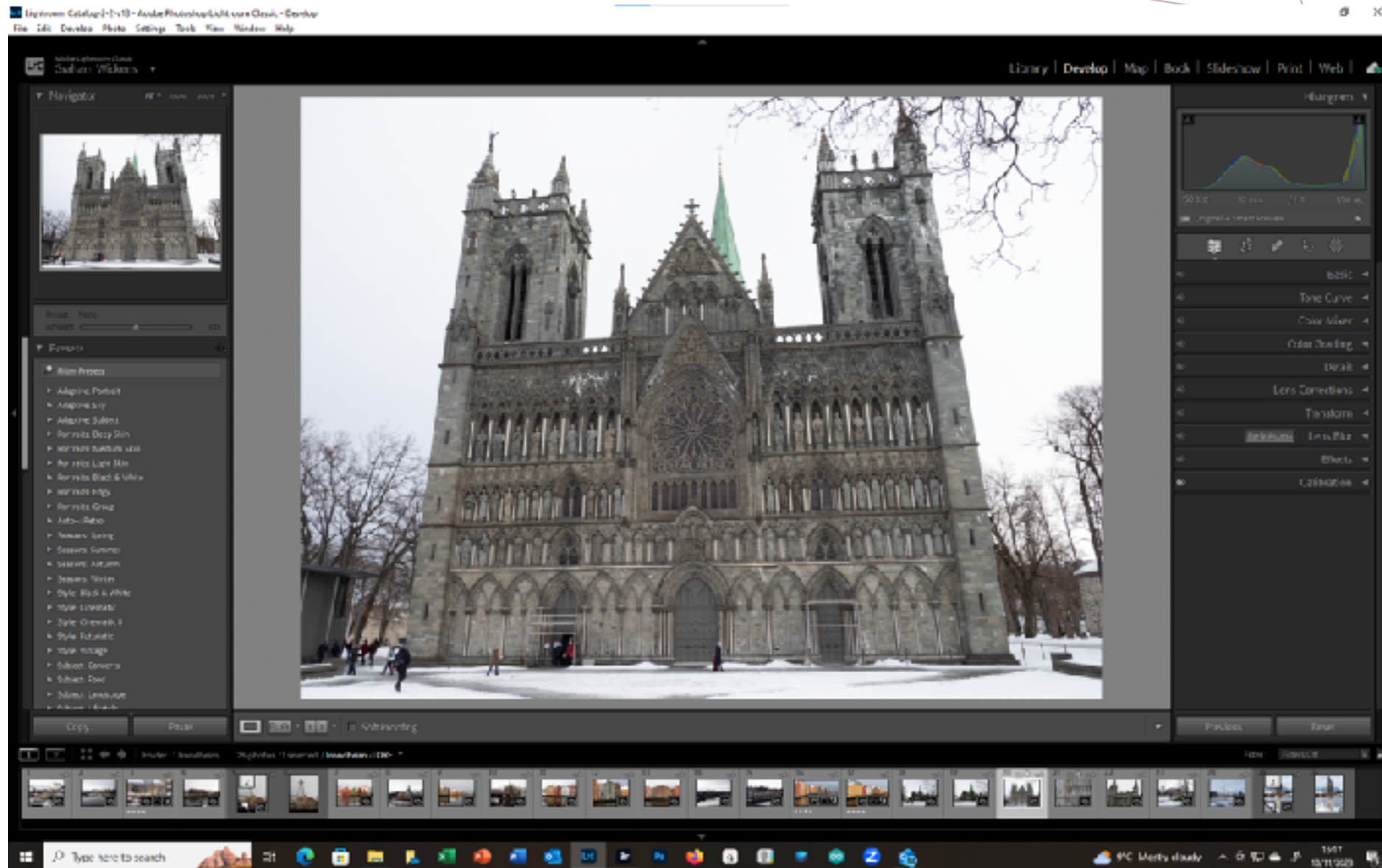
To upright  
slide  
“vertical” to  
the left



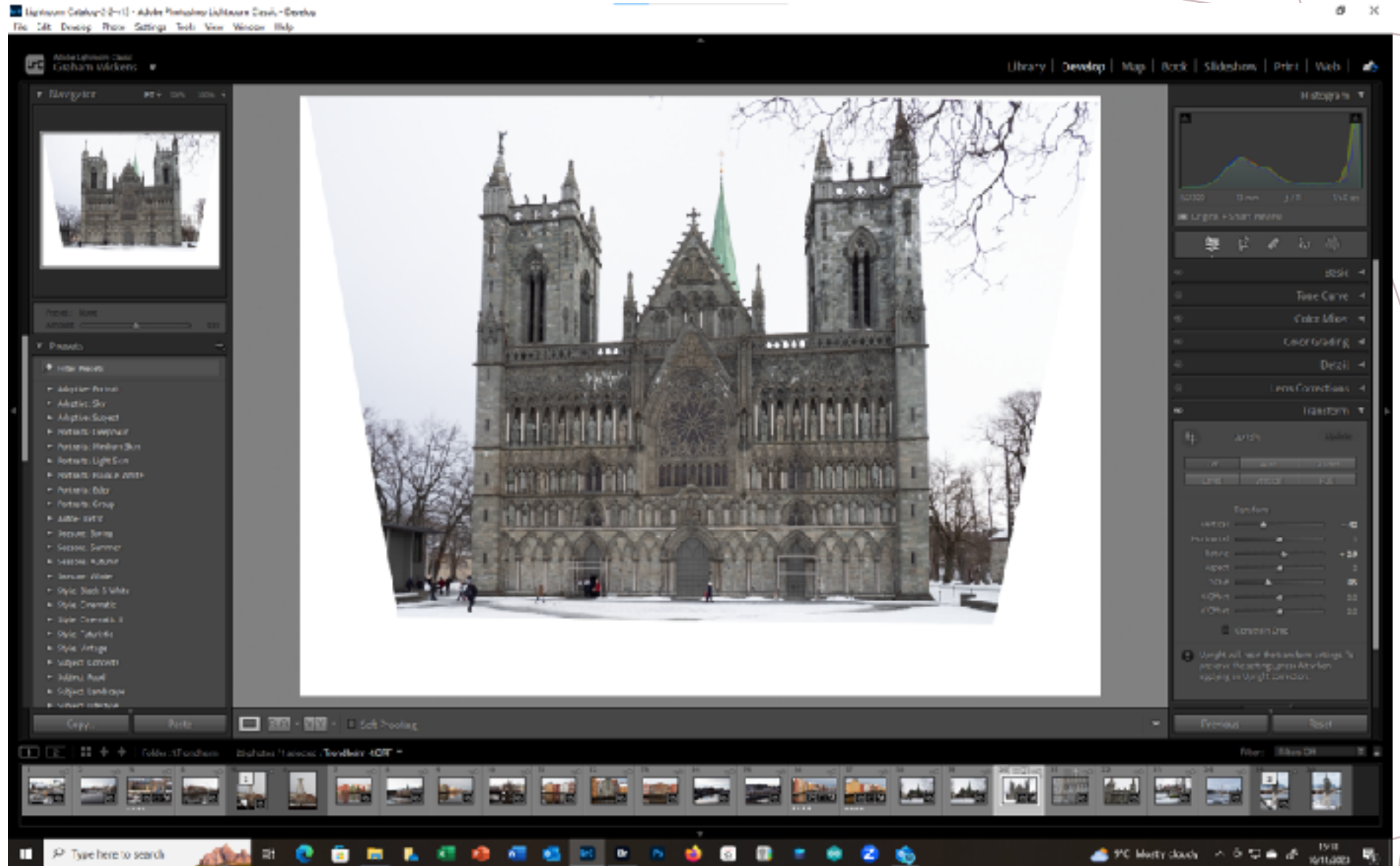
To recover the lost top of the picture slide “scale” to the left and then crop



In Lightroom the corrections are in the “Lens Correction” section of the Develop tab

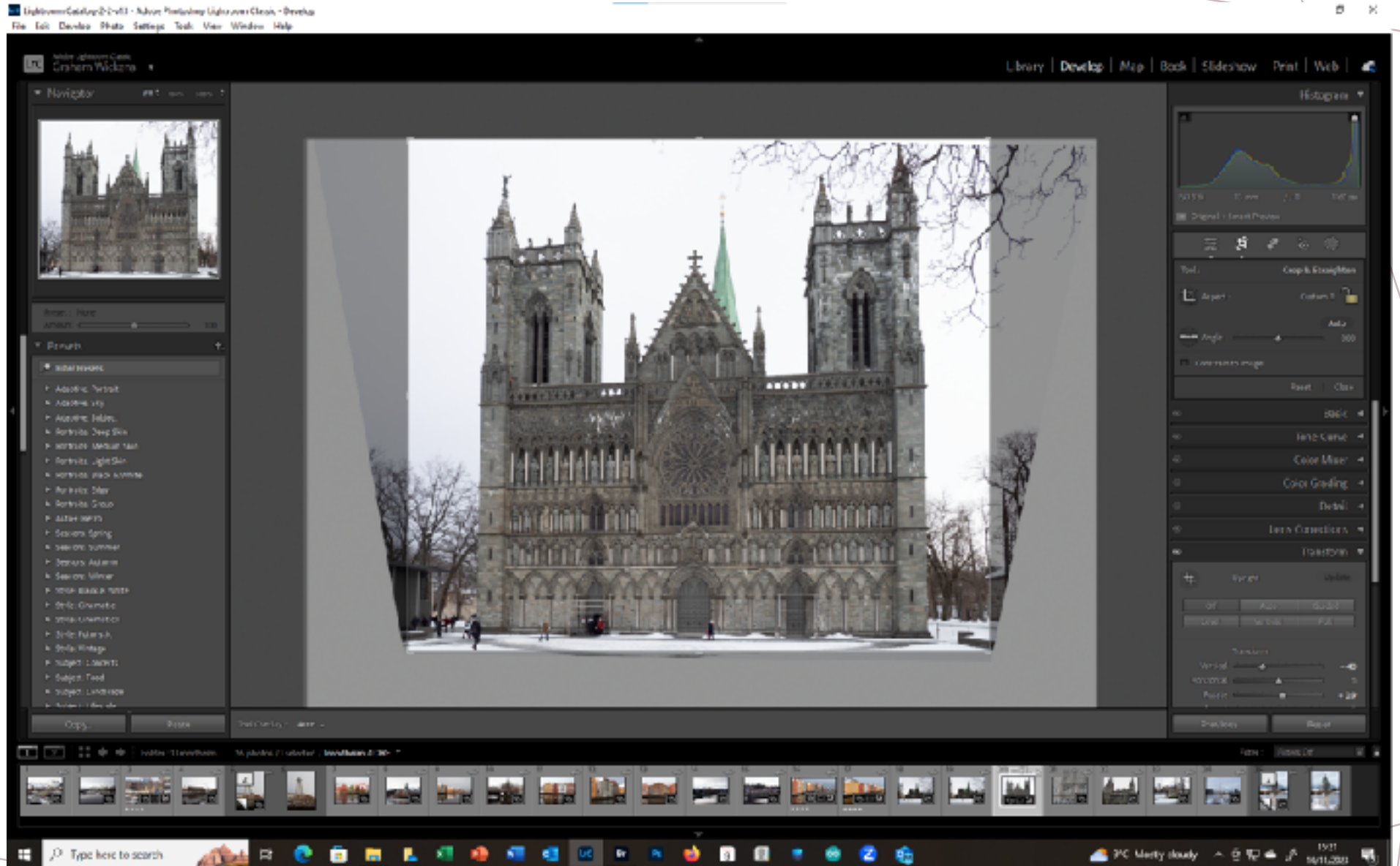


Again there are a vertical slider and a scale slider

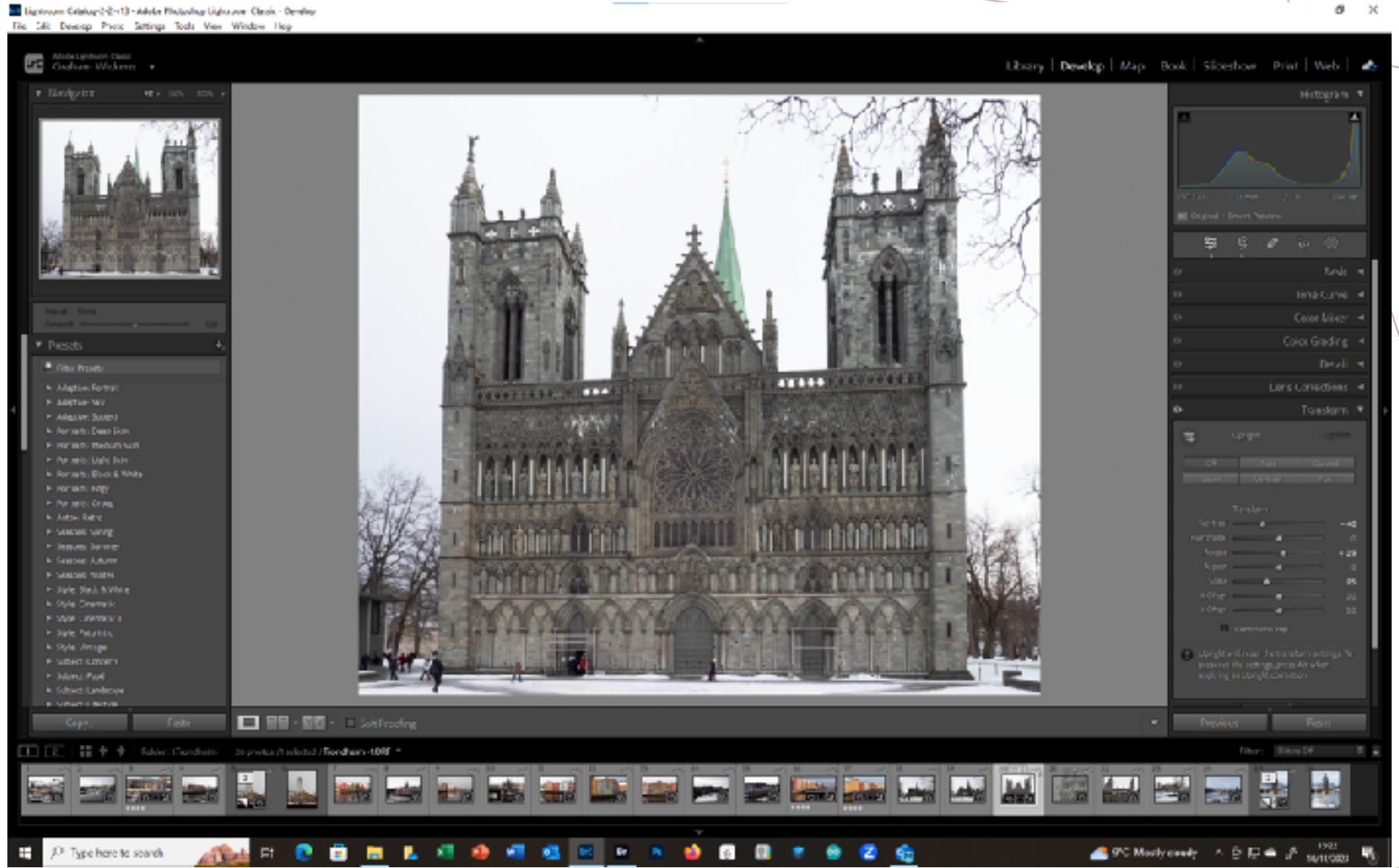




Then crop



Both Photoshop and Lightroom give similar results but you do lose some pixels so it is probably best to have a margin around the building that can be lost



If we consider  
what view to  
take of a  
building there  
are lots of  
options

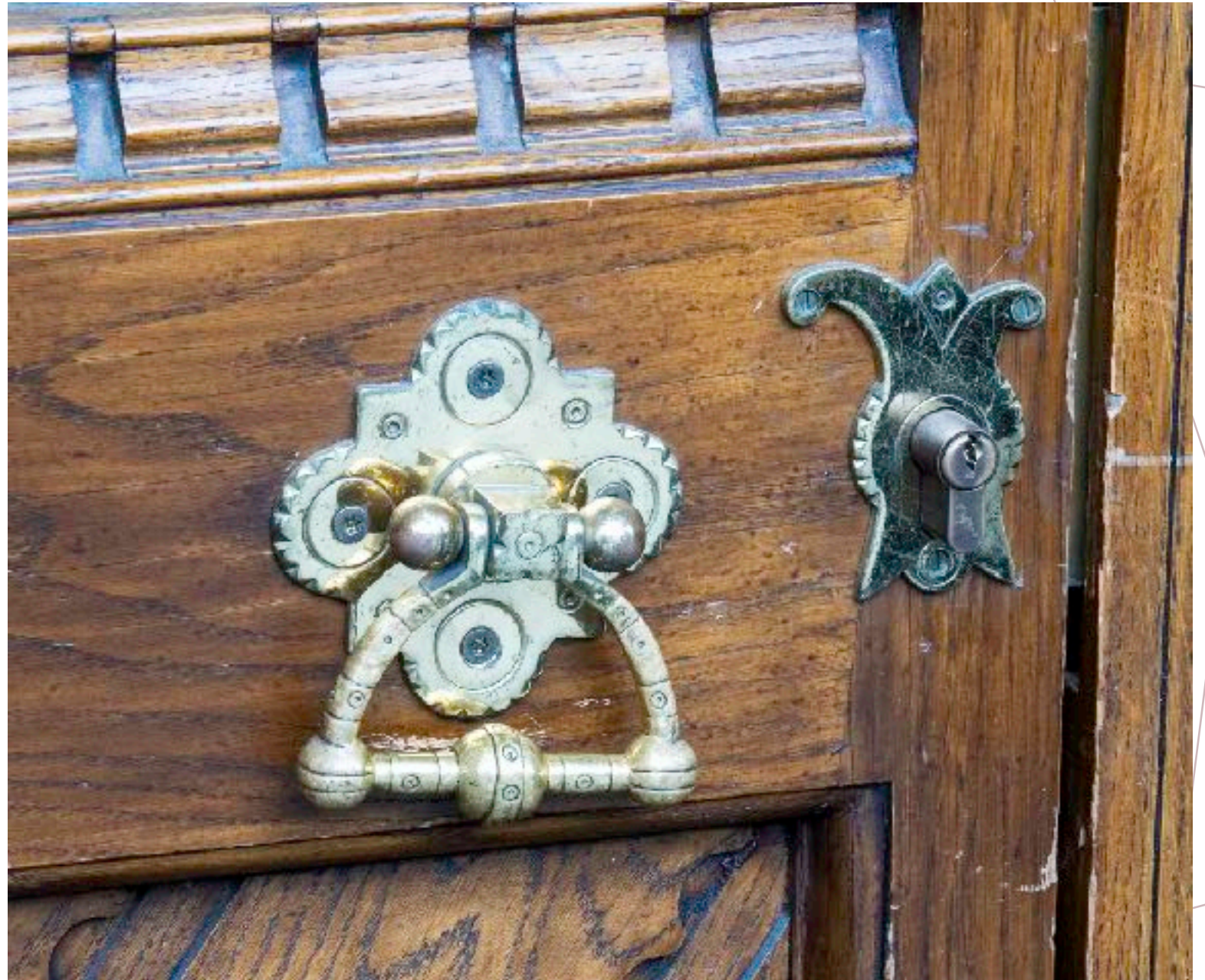
A wide angle  
shot



A telephoto  
shot



A detail  
shot



Perhaps one of the first considerations is from where to take the shot in order to achieve the result that you are looking for. Straight on to the building or from an angle





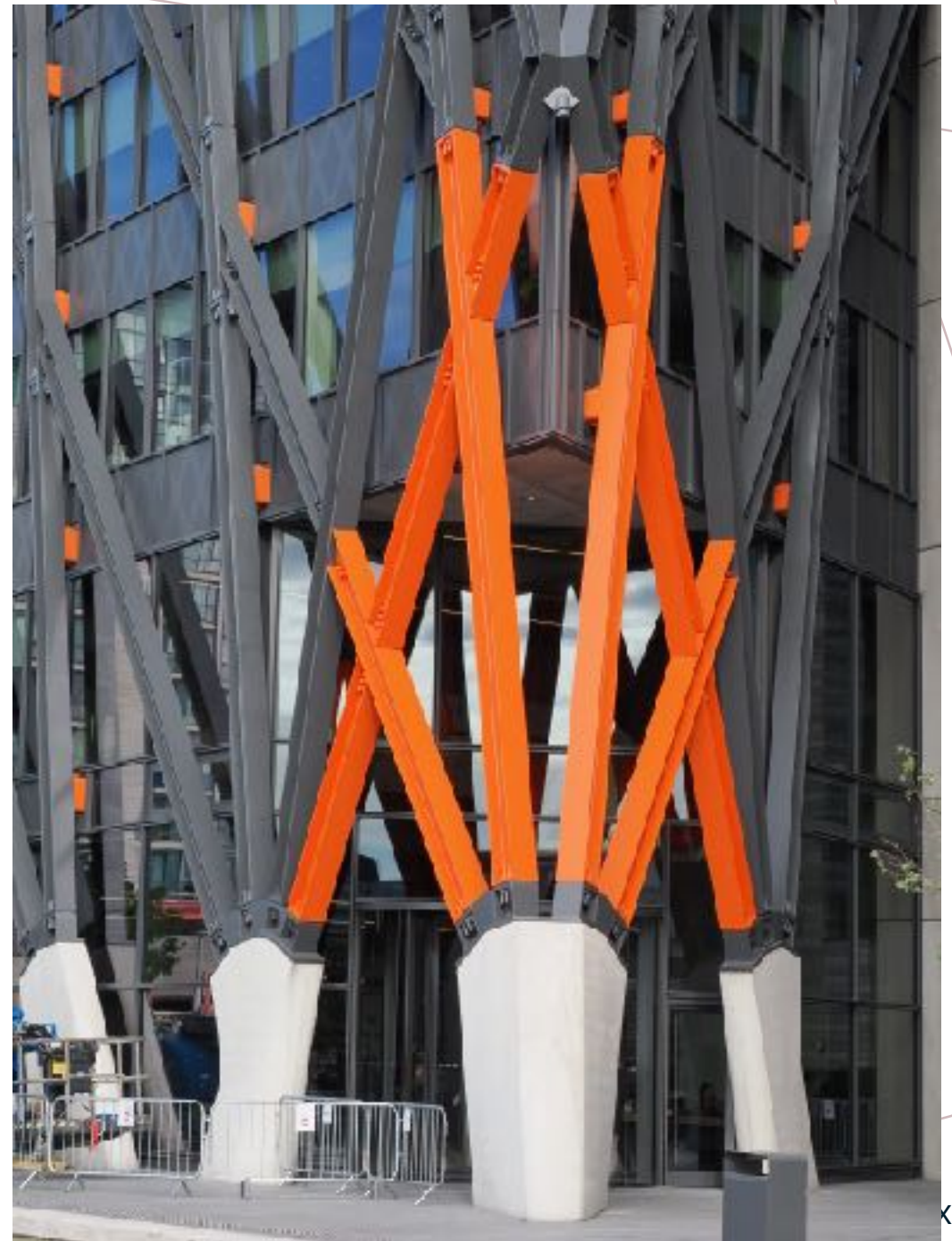




This building was difficult to photograph as it was not easy to get far enough away even with a very wide-angle lens



Perhaps it is better to concentrate on a small part instead



Of course, you can go to more extreme lengths to get a whole building in



Part of a  
building is  
equally valid



As is detail

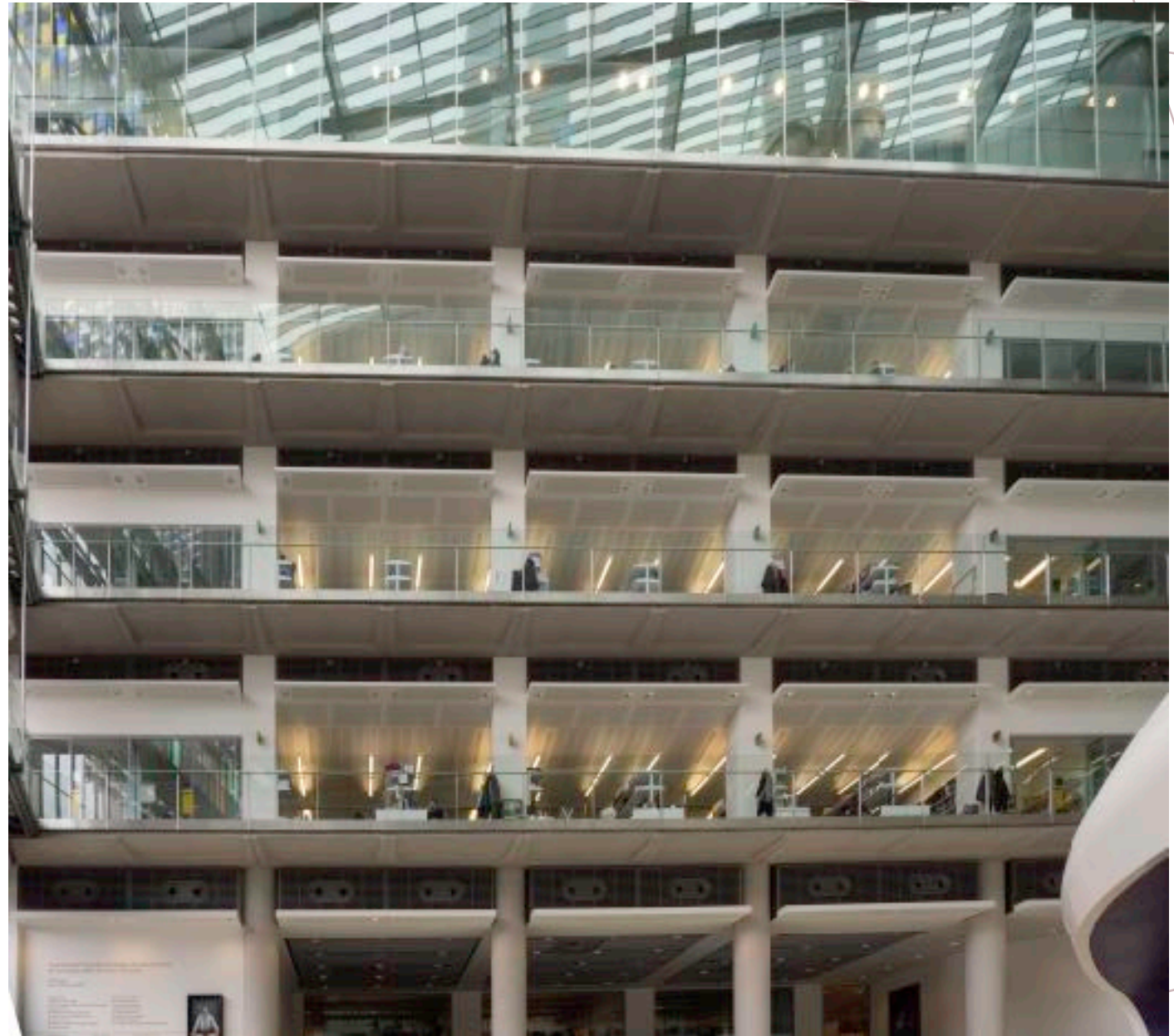


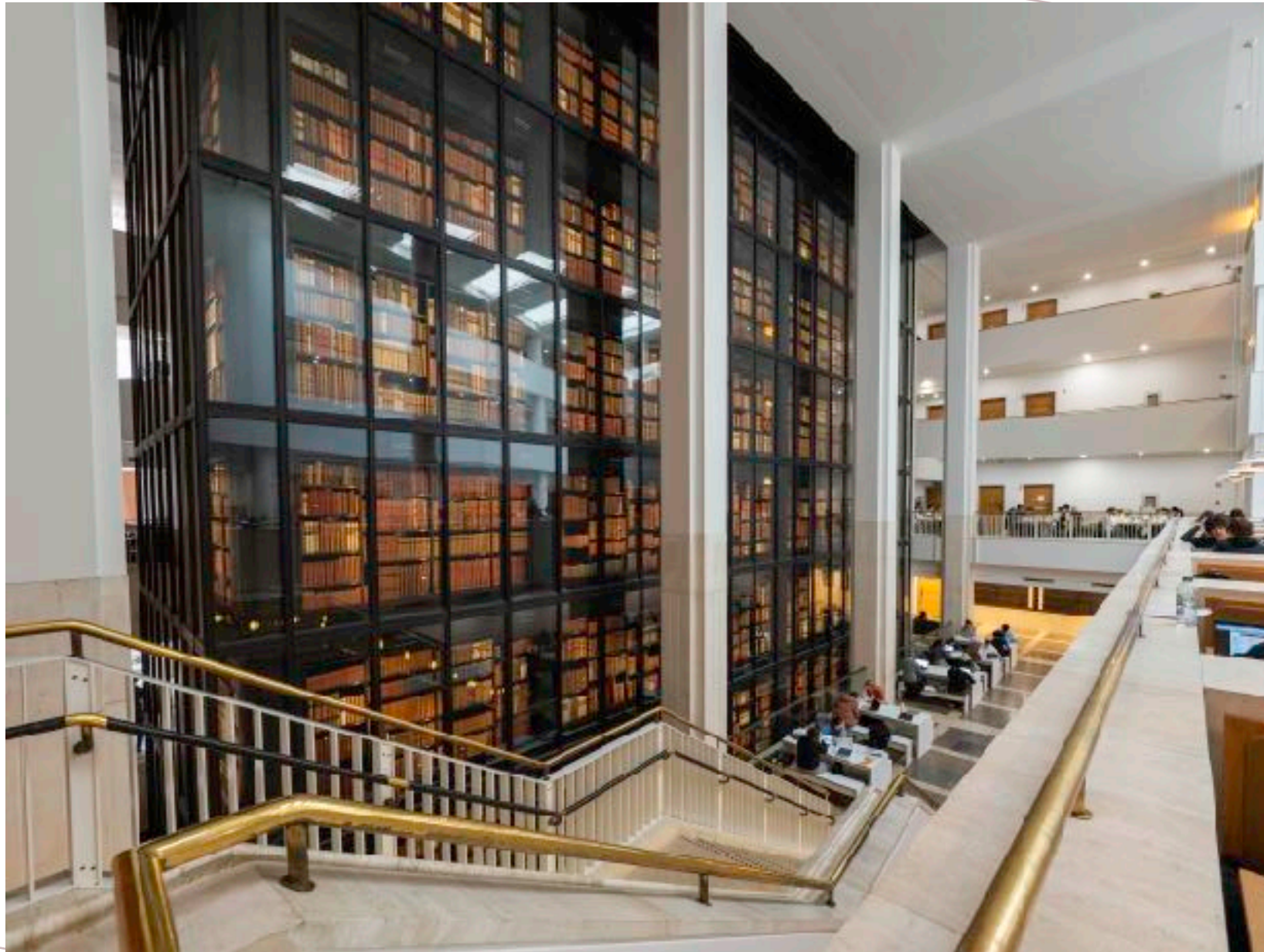
Also, the more  
abstract



Kimon-Maritz-Architecture dramatic angle

The internal architecture of a building opens up a lot of opportunity



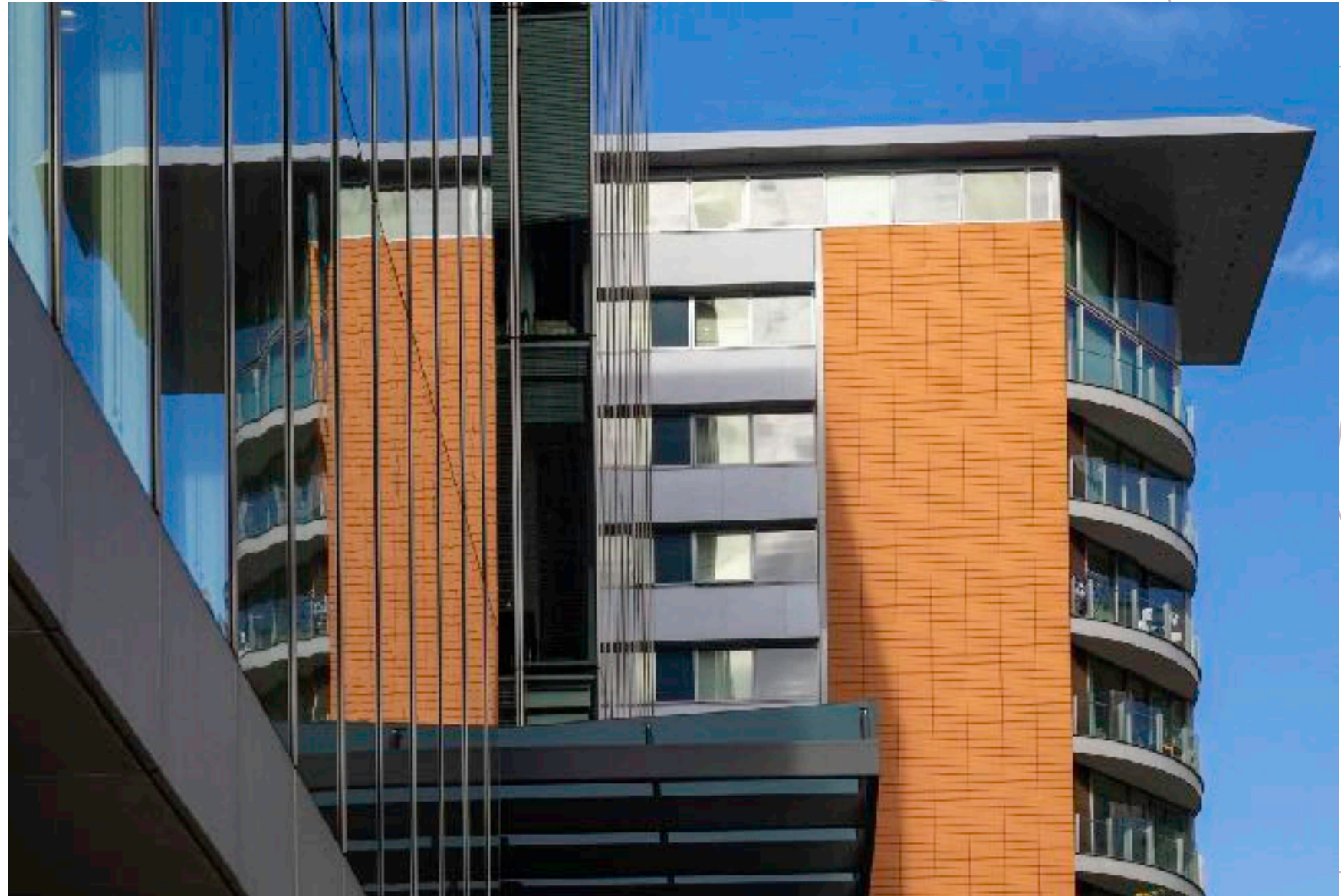




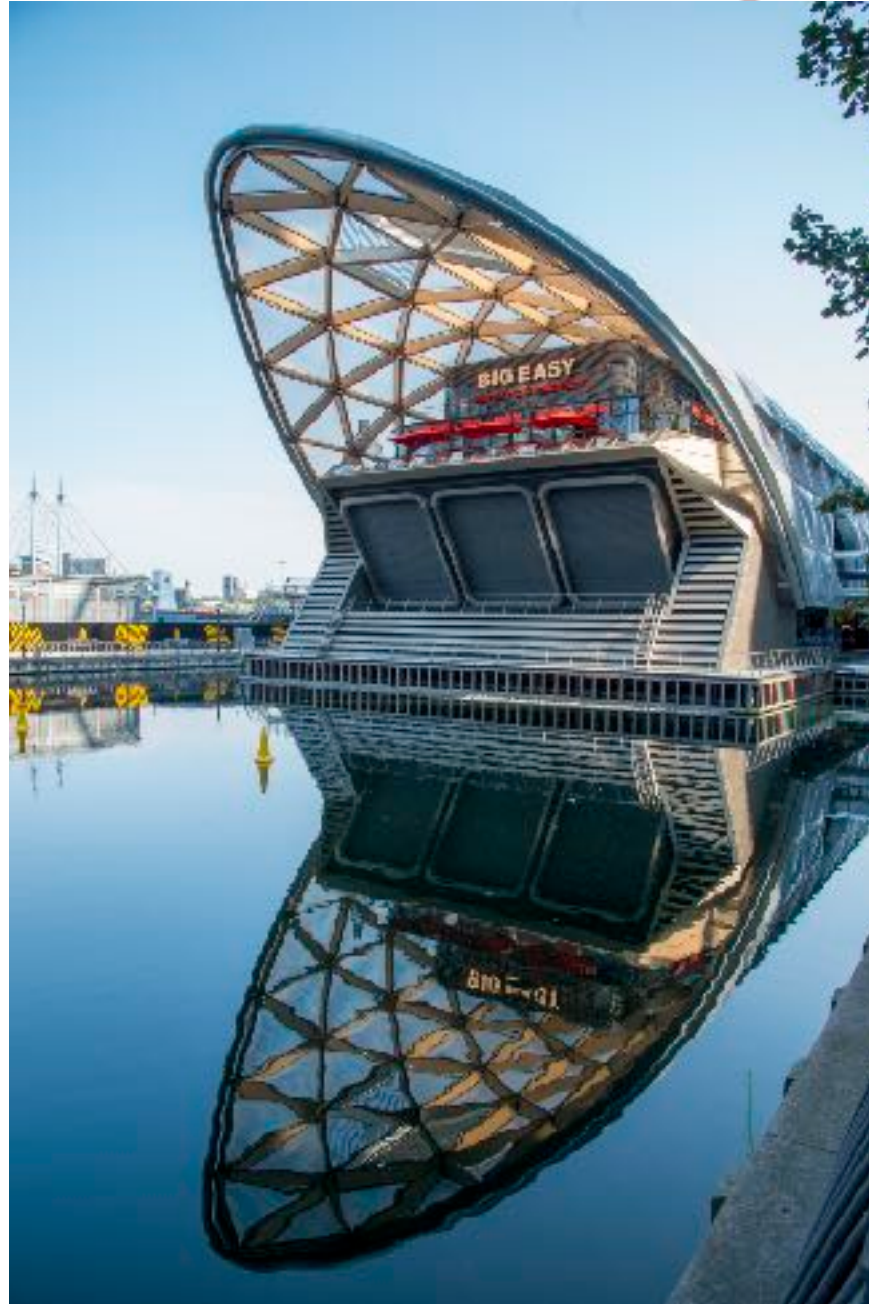
Spiral  
Staircases  
are often  
photograph  
ed



With so much glass used in modern buildings reflections can be a great source for photography



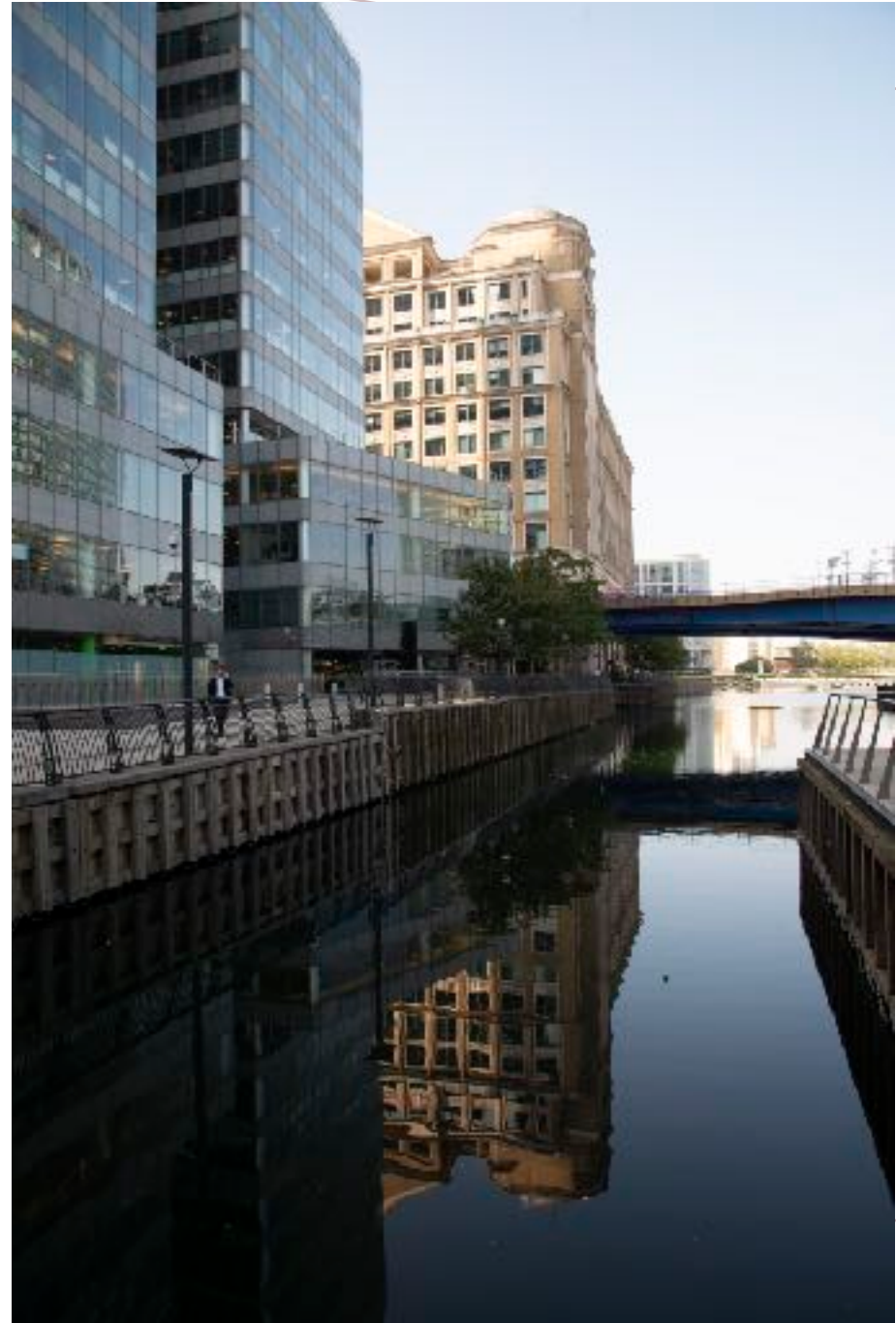
Water also



Shots like this can obviously be tricky. This one gets the reflection



This one has the building



So HDR can help, both outdoors



And inside



Shots taken at night, of course bring a different view.

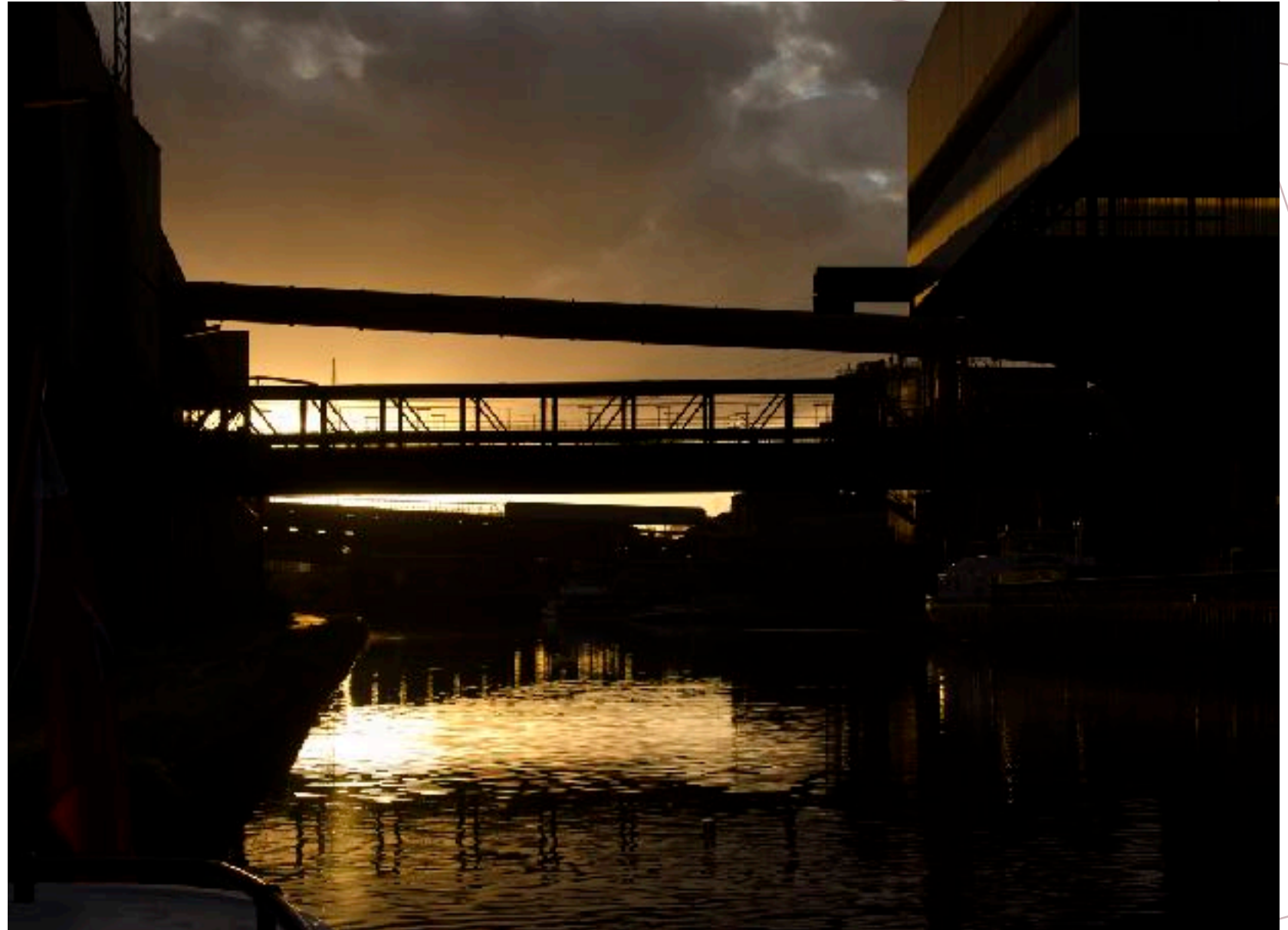




Industrial  
architecture is yet  
another part of this  
subject, both during  
the day



And at night



# Cityscapes

Cityscape Photography is the art of capturing the beauty and diversity of urban landscapes



It can be challenging to find the best angles, perspectives and lighting conditions to showcase the architecture, culture and atmosphere



If we go back to the Gasholders from this perspective not a particularly attractive place to live perhaps



But perhaps  
from this  
perspective  
not so bad  
after all



We will all  
have our  
own  
approach  
to  
cityscapes.  
For  
example,  
from a  
high  
building





Or from ground level-part of the same area





Cityscapes lend themselves very much to panoramic shots



This was taken with an iPhone



As was this one



Again, reflections may enhance a cityscape



Not just in water



Night shots can add atmosphere





Weather also can alter the feeling of a shot





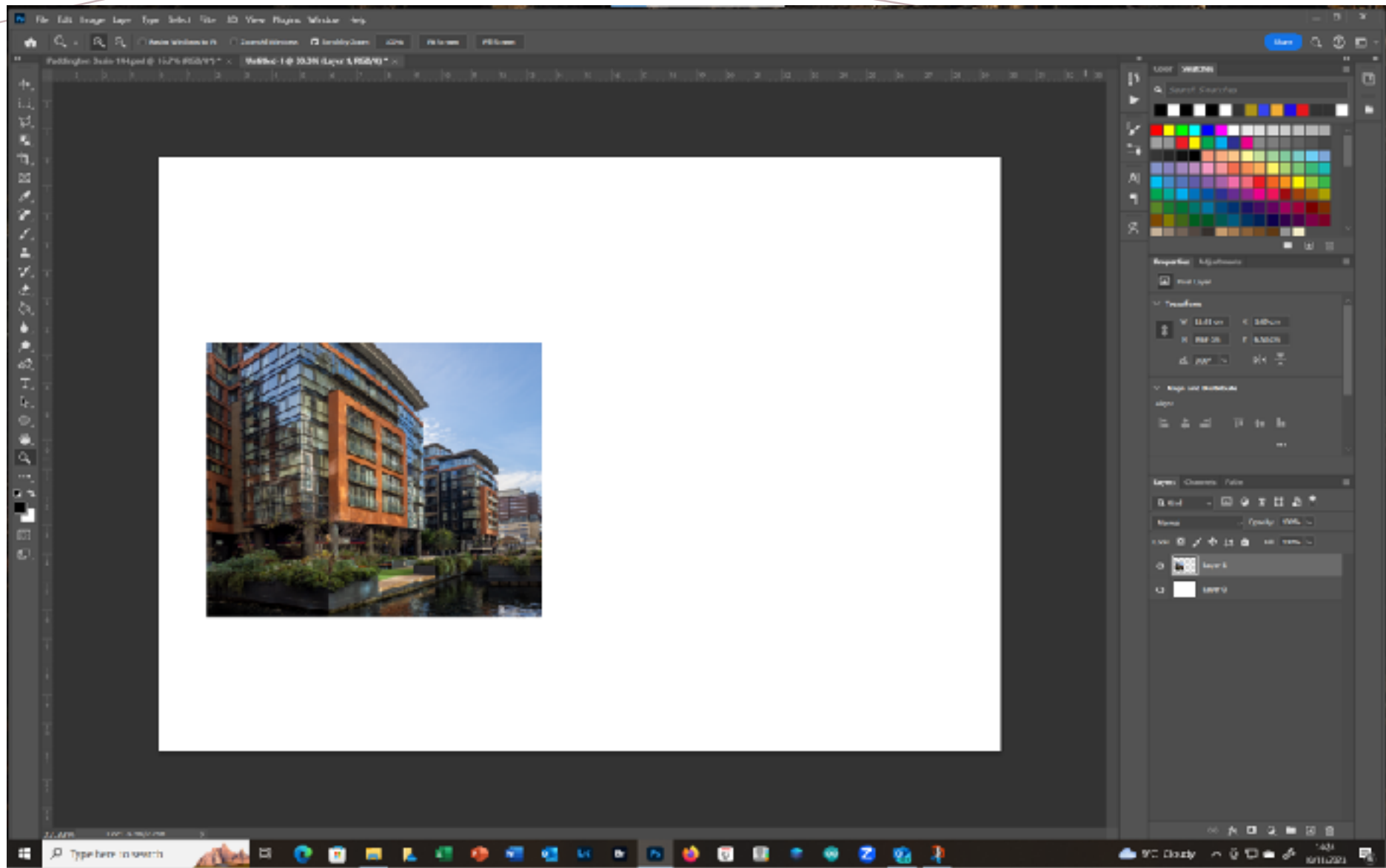


Photo by Marc-OlivierJodoin

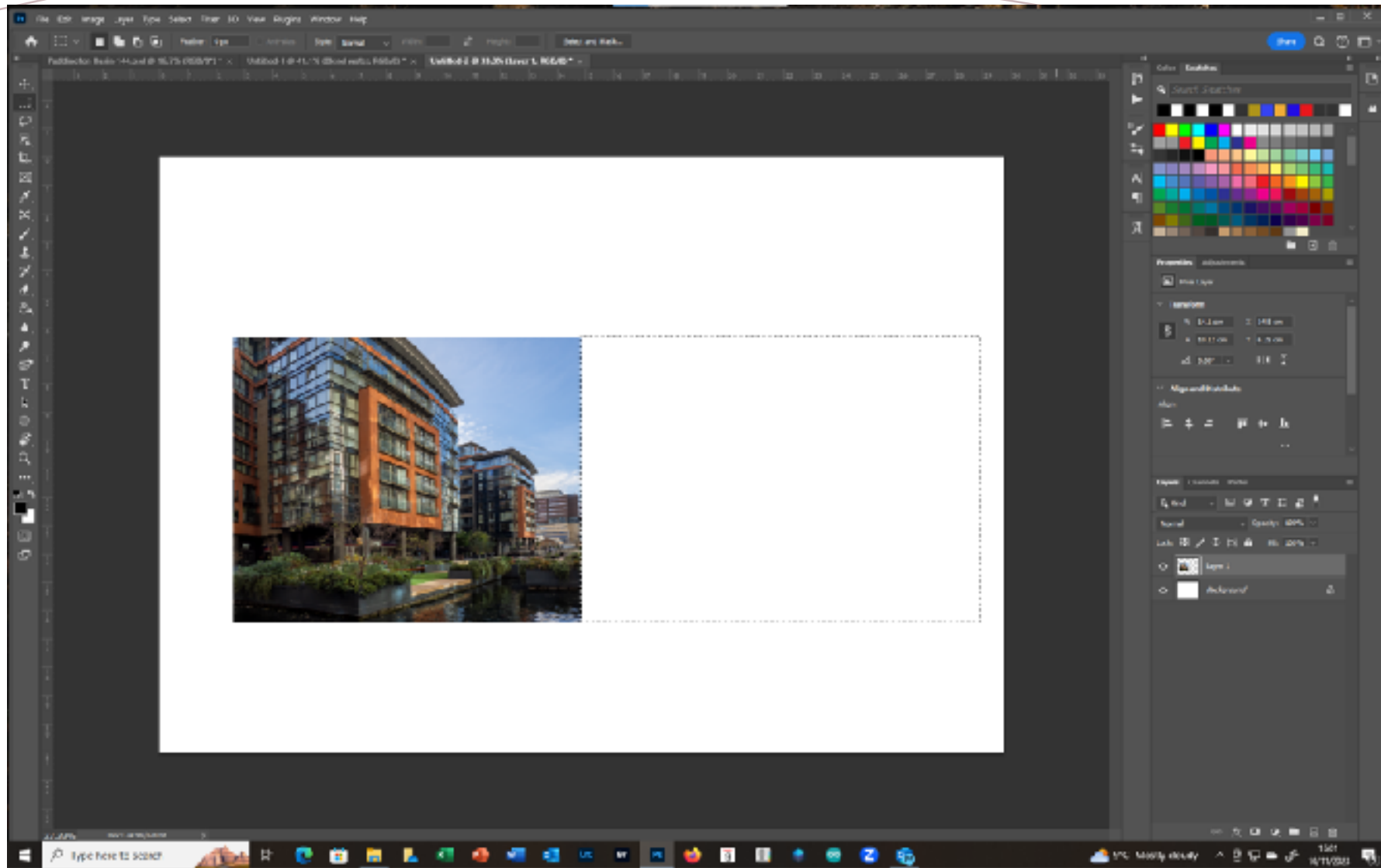
And of course, long exposure light trails



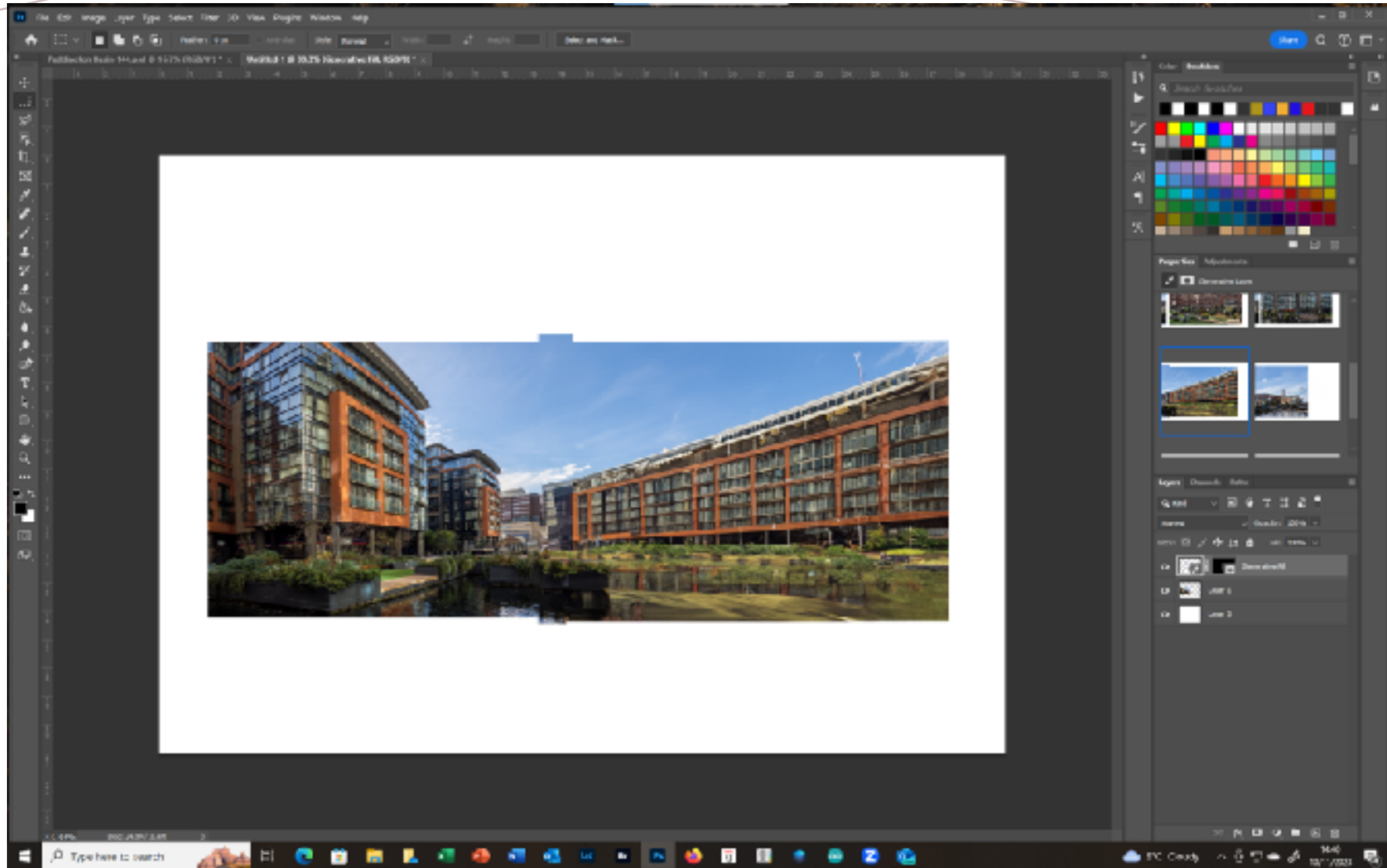
Or if you feel lazy you could sit in front of your computer and open a picture like this



Drop it onto a new blank background



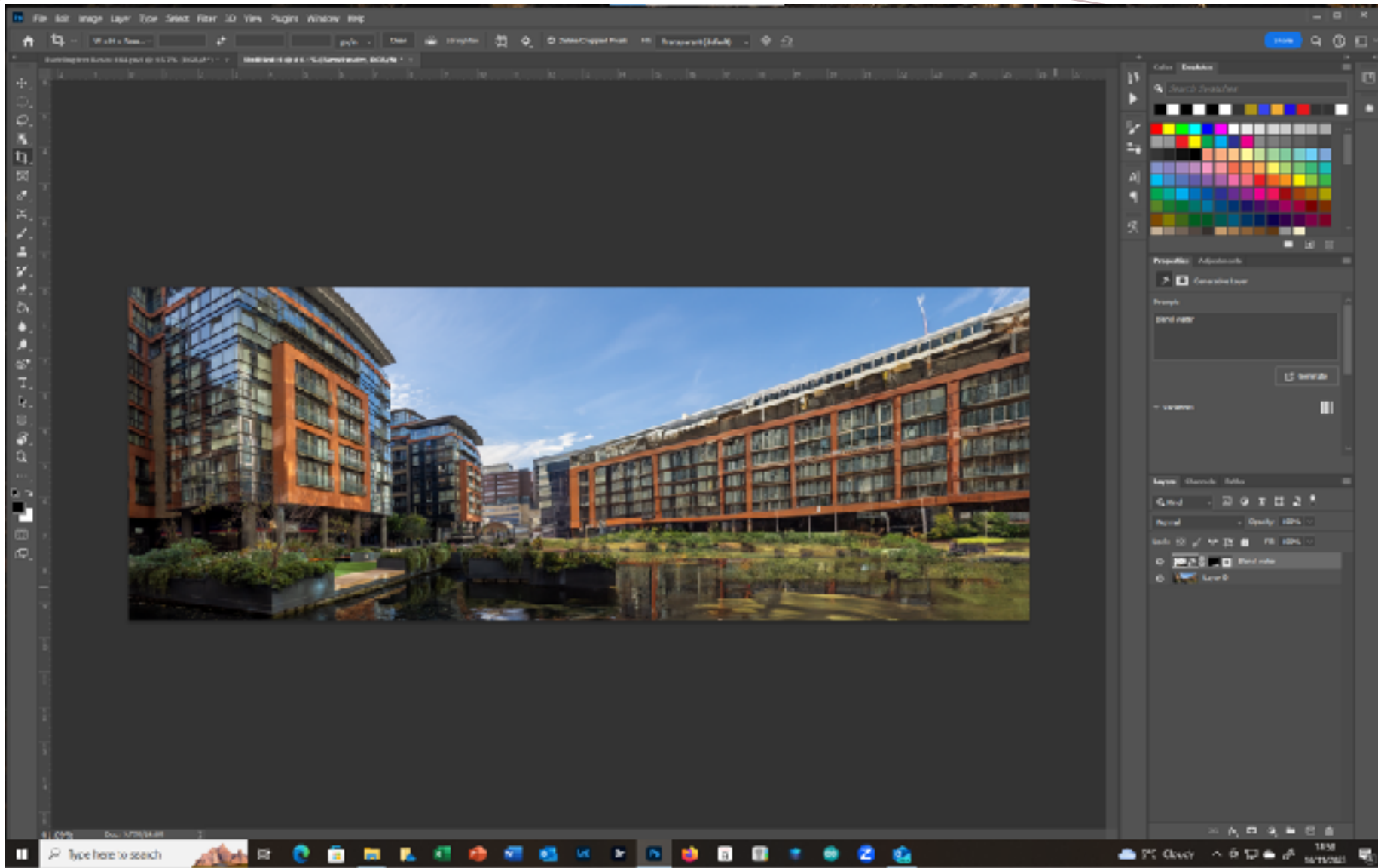
Select an extended area along side



Get the Generative AI to fill the area in



Tidy it up



And crop





AI cityscape

*THANK YOU*

